

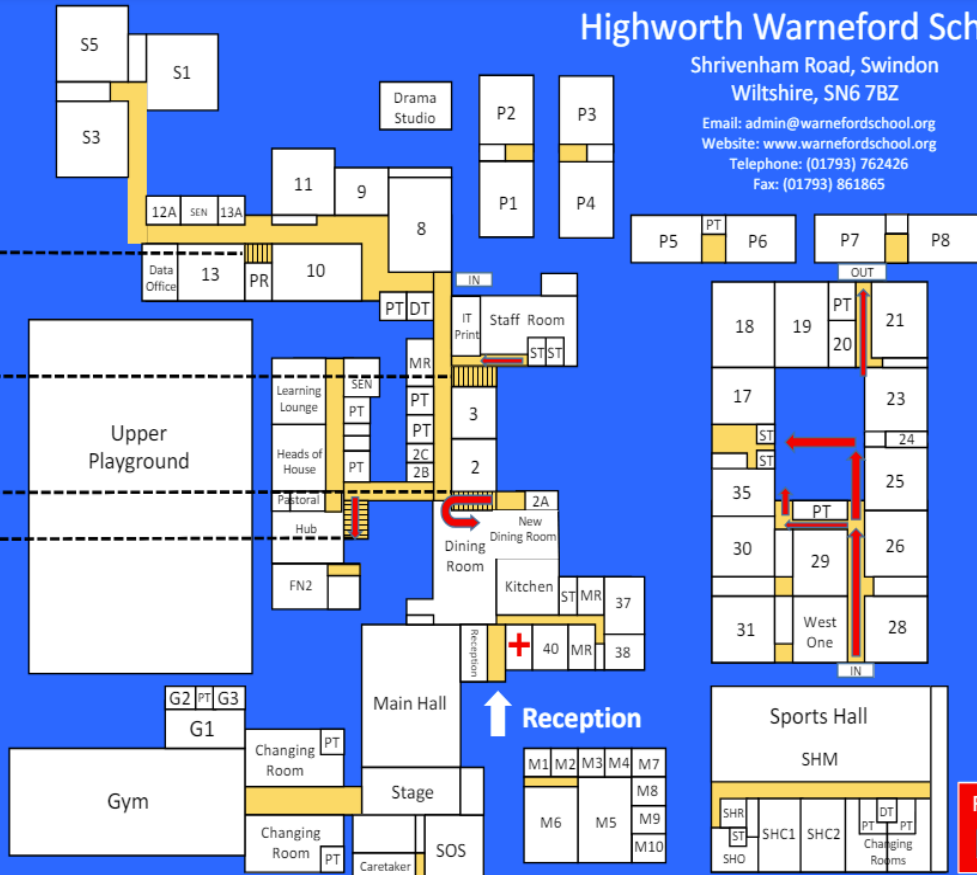
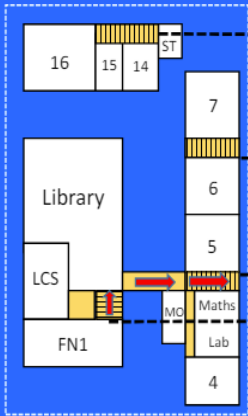
Highworth Warneford School

Shrivenham Road, Swindon
Wiltshire, SN6 7BZ

Email: admin@warnefordschool.org
Website: www.warnefordschool.org
Telephone: (01793) 762426
Fax: (01793) 861865



First Floor



Car Park



Sports Field

Fire Assembly Point

Lower Playground







Highworth Warneford School Plan - Room Layout Details

2. English
3. English
4. Maths
5. Maths
6. Maths
7. Maths
8. Science
9. English
10. Science
11. Science
13. Science
13A. Science Office
14. Finance
15. Finance
16. Computer Suite
17. Design & Technology (Textiles)
18. Design & Technology (Food Tech)
19. Design & Technology (Food Tech)
21. Art
23. Computing
25. Computing
26. Drama
28. Art
29. Computing & Business
30. Design & Technology (Resistant Materials)
31. Design & Technology (Resistant Materials)
35. English
Caretaker
Changing Rooms
Dining Room

FN1. English
FN2. English
Gym
G1 Exam Room
G2 Exam Room
G3 Exam Room
Int. Interview Room
Kitchen
Heads of House Office
L5. Pastoral Office
L6. Learning Lounge
Library
Main Hall
ML. Maths Lab
MO. Maths Office
MR. Meeting Room
M5. Music
M6. Music
New Dining Room
PR – Prep Room
P1. History
P2. History
P3. Geography
P4. Geography
P5. RE
P6. Languages
P7. Languages
P8. Languages
S1. Science
S3. Science

S5. Science
SOS. School of Solutions
Reception
SHC1. Sports Hall Classroom 1
SHC2. Sports Hall Classroom 2
SHM. Sports Hall (Main Hall)
SHO. Sports Hall Office
SHR. Sports Hall Reception
Staff Room
Stage
West One Computer Suite

PT Pupil Toilets
ST Staff Toilets
DT Disabled Toilets
+ Medical Room
 Stairs
 Corridor
 One way corridor
 Stairway Route